

Spring Creek

TOWNHOMES

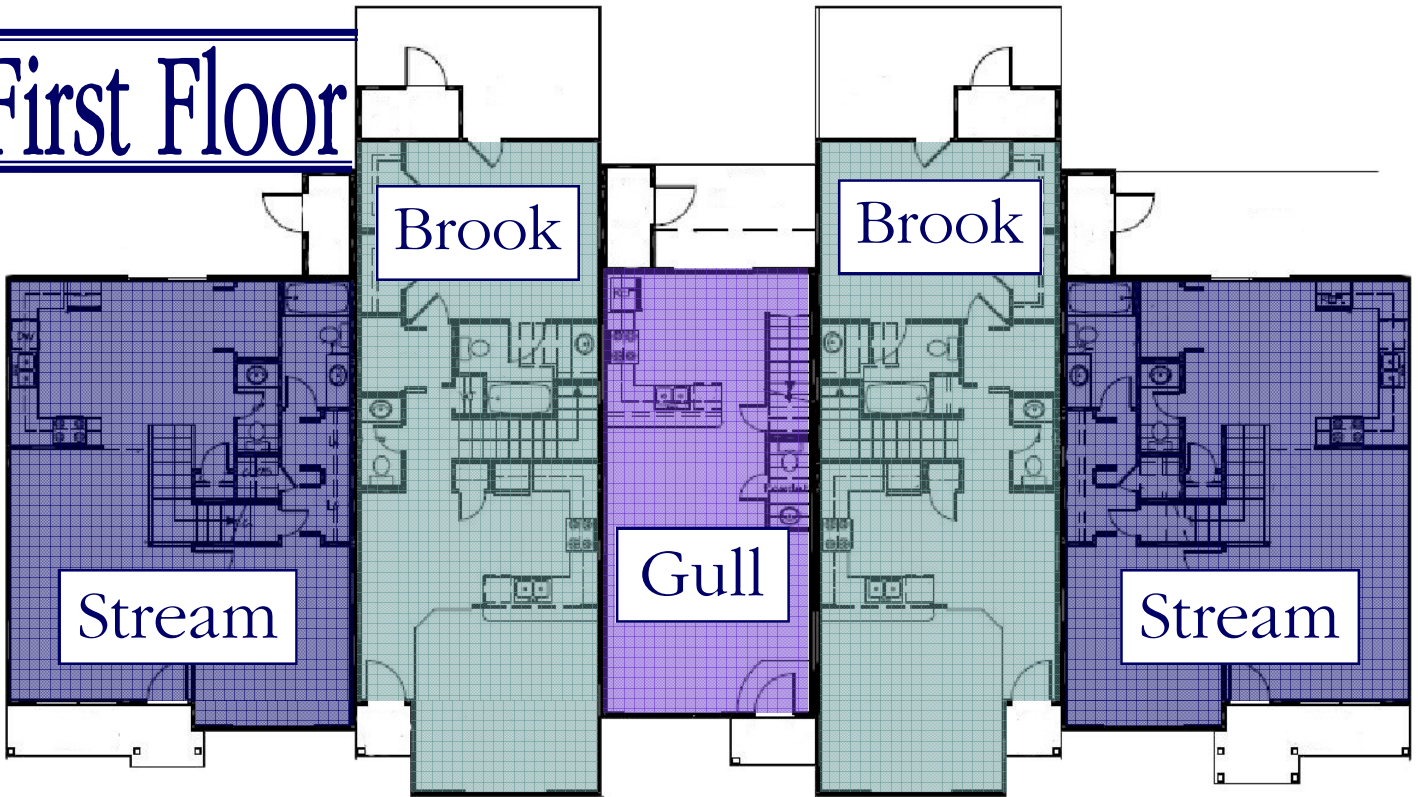


*Welcome to Your
Carefree Lifestyle!*

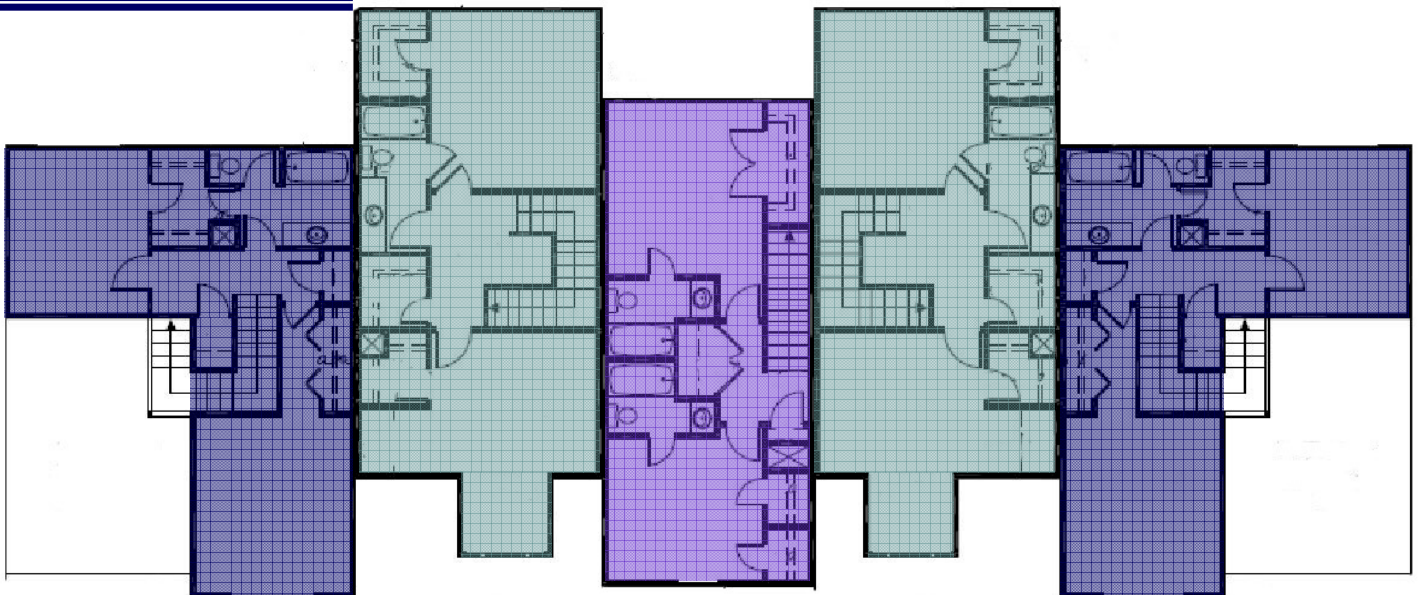
Marketing By:  **The Smitt Group**
Real Estate and Development

Building Layout

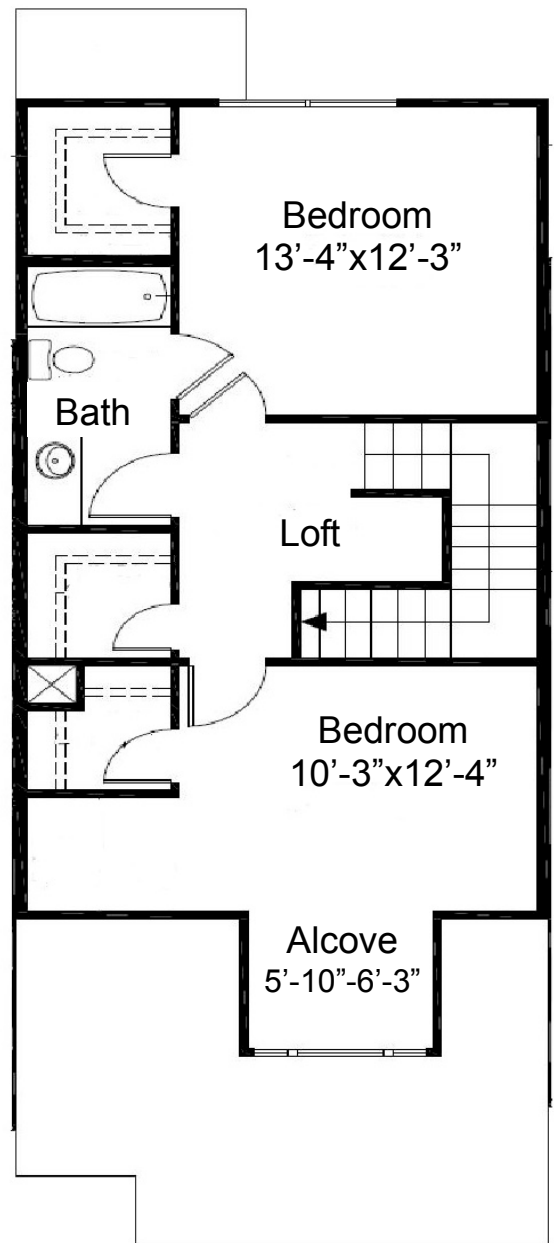
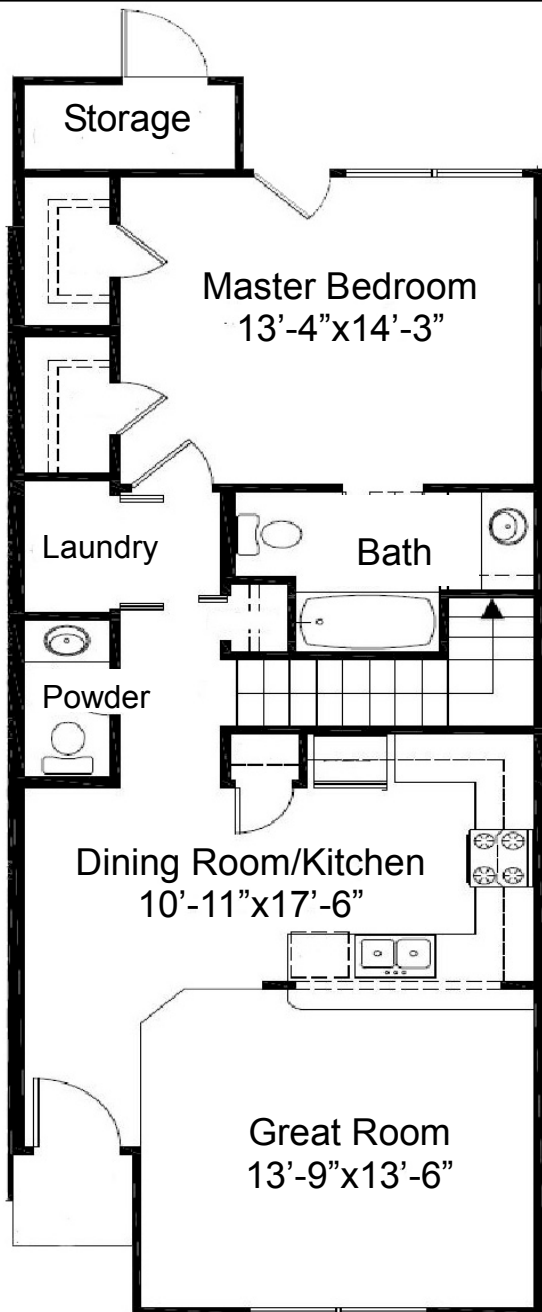
First Floor



Second Floor



The Brook



1507 Heated Sq. Ft.

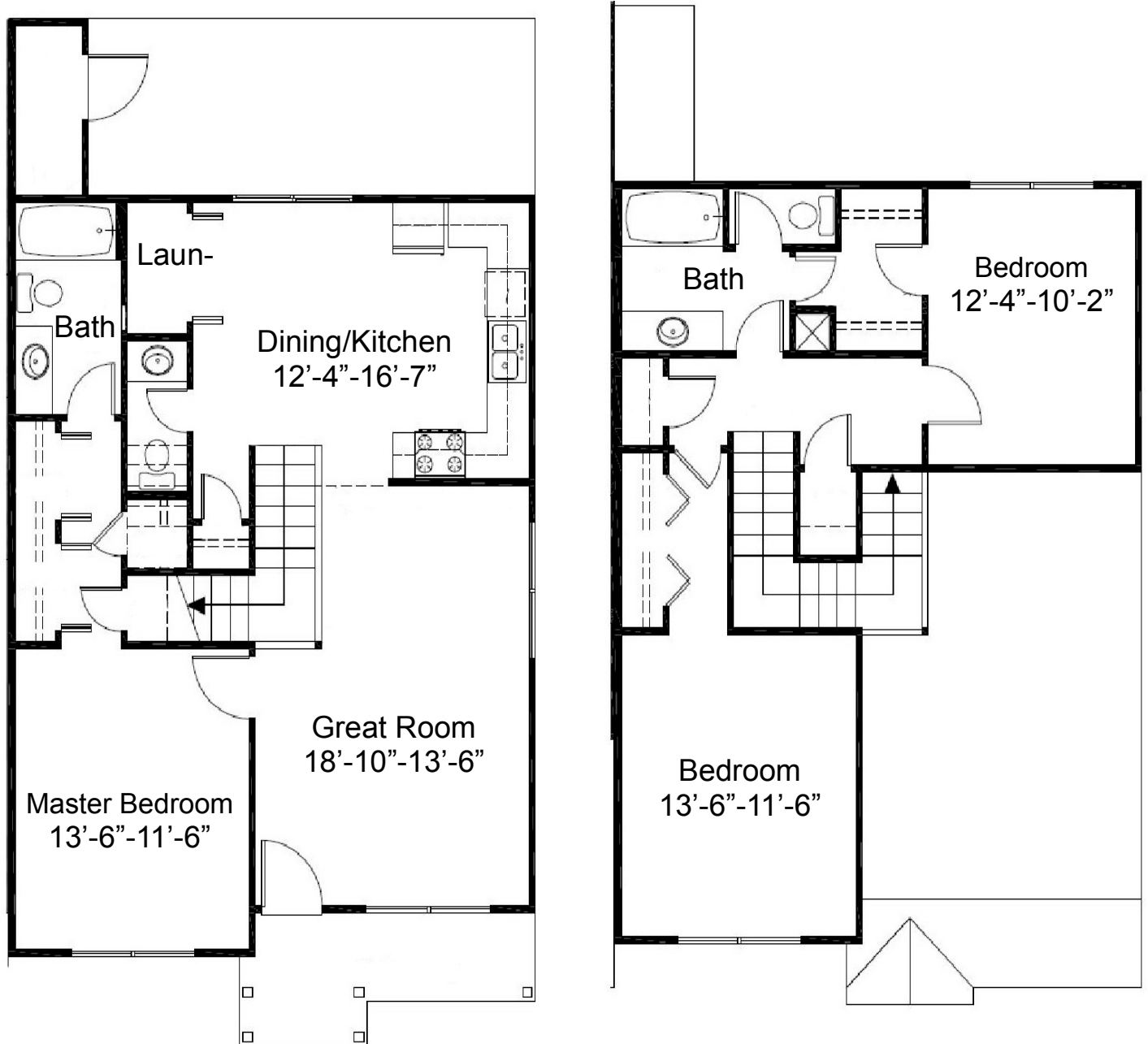
This Spacious floor Plan Features the Master Bedroom Downstairs, Large Bedrooms, and an inviting Great Room.



The Smitt Group
Real Estate and Development

www.SpringCreekMB.com
www.SmittGroup.com

The Stream



1437 Heated Sq. ft.

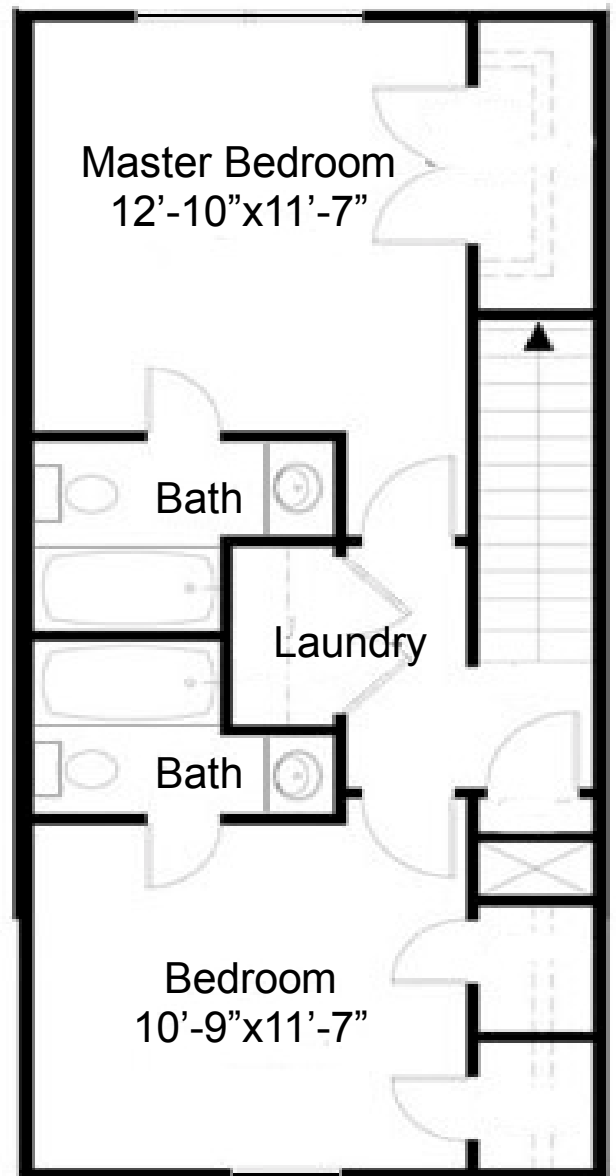
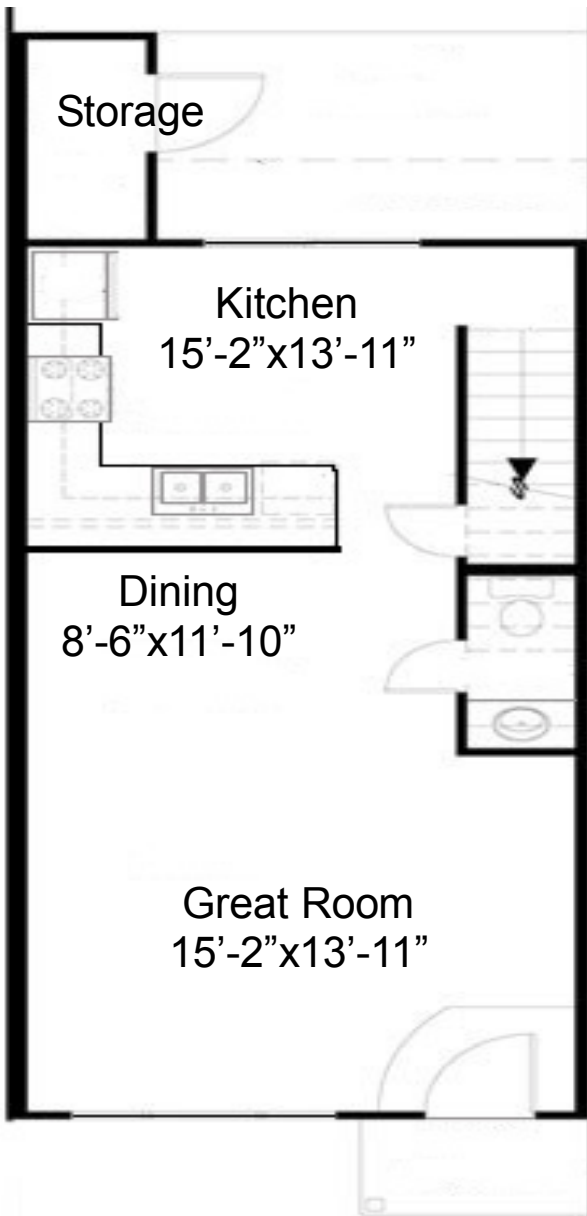
The Stream is a Spacious End Unit Featuring Lots of Natural Light and the Master Bedroom Downstairs with Tons of Closet Space



The Smitt Group
Real Estate and Development

www.SpringCreekMB.com
www.SmittGroup.com

The Gully



1062 Heated Sq. Ft.

The Gully is the only 2 Bedroom Floor Plan. It features a very Spacious Great Room and large Bedrooms.



The Smitt Group
Real Estate and Development

www.SpringCreekMB.com
www.SmittGroup.com

Our Community at a Glance



Standard Spec Sheet

Floor Structure

- ◇ #5 Rebar Structural Steel
- ◇ 6 Mil. Poly Vapor Barrier
- ◇ Long Lasting Termite Protection
- ◇ Carpet and Vinyl*

Plumbing

- ◇ 50 Gallon Quick Recovery Water Heater
- ◇ PVC Drains and Vent Stacks
- ◇ Washer & Dryer Connections

Electrical

- ◇ Pre-wired for TV, Digital Cable, and High Speed Internet
- ◇ Pre-wired for Ceiling Fans (Living Room & Master BR)*
- ◇ All Copper Wiring

Roof Structures

- ◇ First Floor 9' Ceilings, Second Floor 8' Ceilings
- ◇ Architectural Shingles
- ◇ R-30 Blown Fiberglass Insulation
- ◇ Engineered Truss System
- ◇ Soffit and Ridge Vents
- ◇ THE STREAM has Vaulted Ceiling in Great Room

Exterior

- ◇ 2x4 and 2x6 SPF Studs 16" O.C.
- ◇ Treated 2x4 Sill at Concrete Contact Points
- ◇ Vinyl Siding
- ◇ Insulated M&W Double Hung Windows w/ Screens
- ◇ R-11 Fiberglass Interior Wall Insulation
- ◇ Insulated Sliding Patio Doors*
- ◇ Vinyl Shutters
- ◇ Window and Door Headers

Heating & Cooling

- ◇ Energy Efficient Heat Pump
- ◇ Digital Thermostat
- ◇ Insulated Duct System

Interior

- ◇ Sound Resistant Insulated Double Walls
- ◇ 1/2" Type X Fire Rated Sheet Rock
- ◇ Wood Molding and Trim for Doors*
- ◇ THE BROOK has a Dormer Window in Bedroom and Large Storage Area Upstairs

Kitchen

- ◇ Raised Panel Cabinets (3 Optional Colors)*
- ◇ Pantry Closets
- ◇ Pre-Formed Rolled Edge Laminate Countertops*
- ◇ 7" Stainless Steel Double Bowl Sink*
- ◇ Price Pfister Single Handle Faucet w/ Sprayer*
- ◇ GE Dishwasher Nautilus 5-Cycle*
- ◇ 2600 RPM Disposal*
- ◇ 1.4 Cubic Foot GE Microwave Over Stove w/ Light*
- ◇ Recessed Light*

Bath

- ◇ 36" Fiberglass Tub or 5' Shower*
- ◇ Cultured Marble Vanity Tops
- ◇ Price Pfister Faucets*

Community

- ◇ Underground Utilities
- ◇ Beautiful Master Planned Landscaping
- ◇ Street and Building Lights
- ◇ Pavilion and BBQ Facilities w/ a Park

***Upgradeable per request prior to specific construction stage.**

Seller Reserves the right to make changes, substitutions & deletions as they see fit without prior notice to purchase agreement.