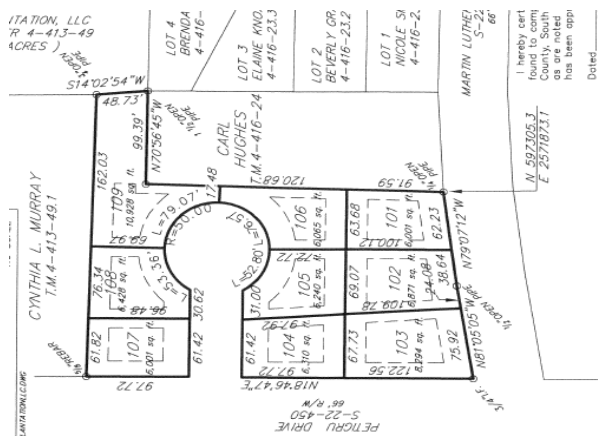


PAWLEYS ISLAND 9 LOTS 1.73 ACRES DEVELOPER LIQUIDATION

Auction Event - Premier Property
Wednesday, February 24, 2010, @ 10:00 AM
Hilton Garden Inn at Coastal Grand Mall
Registration Begins @ 9:00 AM

EXUM AUCTIONS AND REAL ESTATE



Corner of Martin Luther King Road
& Petigru Drive, Pawleys Island, SC

- ❖ 1.73(+/-) acre development site
- ❖ 1/2 mile off Highway 17.
- ❖ Zoning allows for multi-family or single-family residential subdivision
- ❖ Conceptual plans for 6 duplex lots or 9 single-family lots
- ❖ Utilities to the street
- ❖ Portion of Tms 04-04130-049
- ❖ Sold Subject to regroup

**Turn right on Martin Luther King Road at traffic light south of Litchfield.
Property is approximately 0.5 miles on the right side of street.**

Terms and Conditions of the Auction:

All Bidders should request and review an information package on or before the Auction event. Bidder packages contain required information to bid and buy at Auction.

Terms: \$10,000.00 deposit due at end of sale. Balance at closing on or before MARCH 31, 2010.

A 10% BUYER PREMIUM WILL BE ADDED TO THE FINAL BID PRICE.

Cooperating commissions of 3% offered to Brokers who properly register a client who becomes the successful Buyer.

All properties are sold "as-is, where-is, as-inspected.

All Bidders must sign and agree to abide by the Auction Terms & Conditions

All offers will be submitted to the Sellers and are subject to confirmation.

All interested parties should seek professional representation for assistance acquiring pertinent information regarding the property and inspecting the property to their total satisfaction.

Exum Auctions & Real Estate Services is acting as agents of the seller. Information provided is not guaranteed but has been provided by sources deemed reliable.

For More information visit www.ExumAuctions.com

843-222-9800

Joe Exum SCAL 2468 / BIC
Main Line: (843) 222.9800 Cell: (843) 457-4779
joe@exumauctions.com